



**University of
Sunderland**

» **European**
Regional Office

University Presentation 2018



life**changing**

An aerial photograph of the University of Sunderland campus and its surroundings. The campus is located on a peninsula, featuring modern buildings with white and grey roofs, green lawns, and parking areas. To the left, a residential area with houses and a large green field is visible. To the right, a river flows through the city, with several boats and a bridge in the distance. The sky is clear and blue.

Welcome to the
University of Sunderland

We have been awarded SILVER in the
Teaching Excellence Framework (TEF)





City & University

Sunderland is one of the largest cities in the North East of England, with almost 300,000 residents. It's a city by the sea, offering visitors a captivating combination of picturesque countryside, award-winning beautiful sandy beaches, a lively city centre and a wide range of fascinating attractions and spectacular events.

University of Sunderland consists of 19,500 students and is an innovative, forward-thinking university with high standards of teaching, research and support. It has strong links with industry and business and works closely with some of the world's leading companies. We were shortlisted for the Time Higher University of the year 2012.

London Campus. In 2012, the University of Sunderland established a new campus in the heart of London. Its located in Canary Wharf, Europe's most important financial centre. A great opportunity for students that choose to live and study in London.



Getting to Sunderland



By Air

- Newcastle Airport is the closest international Airport
- Frequent flights with Easy Jet, KLM, American Airlines, Ryan Air, Air France, Jet2
- Metro runs directly to Sunderland from Newcastle International Airport



By Train

Sunderland has a well-connected rail service with regular train to London, York and Newcastle. (A typical journey to London takes approximately 3 h 30 m)



By Metro

It takes 25 minutes to get from Newcastle to Sunderland by the regional Metro.



Getting to London Campus



From Airport

London has several airports, but most long-haul flights arrive at Heathrow or Gatwick.

To travel from Heathrow airport: walk to Heathrow Central Railway Station and take the Heathrow Connect or Express train to London Paddington Station, then travel to South Quay station.

To travel from Gatwick airport: walk to Gatwick Railway Station and take the Gatwick Express train to London Victoria Station, then travel to South Quay station.



By Tube / DLR

The closest station is South Quay (2 minutes' walk). This is on the Docklands Light Railway (DLR) line, which is connected to the London Underground (also known as the Tube) network.

5 *reasons to study with the University of Sunderland*

1. Campus Safety

Sunderland is one of the safest universities in England and Wales, according to official police data published in June 2014.

3. Accommodation

Four superb Halls of residence in Sunderland and one in London. We guarantee 3 years accommodation - please check available scholarships.

2. Facilities

The University's facilities are undoubtedly among the best in the UK, with over £130m having been invested in our two Sunderland campuses in recent years.

4. Career support and work placement opportunities

5. Students have a plethora of programmes to choose from

96 Undergraduate and 58 Postgraduate programmes

University Successes



- > We have been awarded SILVER in the Teaching Excellence Framework (TEF)
- > Ten academic areas are classified as having “World leading” and “Internationally excellent” research
- > Top 20 in the U.K for 7 subjects including Mechanical Engineering, Tourism and Media - Guardian League Tables 2017
- > Best in the North East for course satisfaction in 6 subjects including Accounting and Finance, Fashion and Textiles and Sociology - The Guardian League Tables 2017
- > Best in the North East for satisfaction with teaching in 6 subjects including Bio-sciences and Business, Management and Marketing - The Guardian League Tables 2017
- > Highest Climber in The Guardian League Tables 2017 - The Guardian
- > 94% of graduates are in employment or further study within six months of graduating
Destination of Leavers from Higher Education (DLHE) survey 2016
- > Best University in the North East – Whatuni Student Choice Awards 2015 (voted by students)
- > 5th in Guardian League Table 2016 for Mechanical and Automotive Engineering
- > Top 10 in U.K for Student Accommodation – Whatuni Student Choice Awards 2015
- > Top 5 in the world for satisfaction with residential service – International Student Barometer 2014
- > Top 5 in U.K for satisfaction with cost of living - International Student Barometer 2014
- > Top 10 in the world for satisfaction with student advice - International Student Barometer 2014
- > Top 5 Students’ Union in the UK – Whatuni Student Choice Awards 2015

Faculties

Faculties

The University is made up of six academic departments known as Faculties:

- > **Faculty of Health Sciences and Wellbeing**
- > **Faculty of Arts and Creative Industries**
- > **Faculty of Business, Law and Tourism**
- > **Faculty of Education and Society**
- > **Faculty of Engineering and Advanced Manufacturing**
- > **Faculty of Computer Science**

Subject Areas

- > Business and Management
- > Combined Subjects
- > Computing
- > Creative Arts
- > Design
- > Engineering
- > English
- > Film
- > Health, Nursing and Clinical Sciences
- > History
- > Journalism and PR
- > Languages
- > Law
- > Media
- > Performing Arts
- > Pharmacy, Pharmaceutical and Cosmetic Sciences
- > Postgraduate Research
- > Psychology
- > Social Sciences
- > Sport and Exercise Sciences
- > Teacher Training and Education
- > Tourism, Hospitality and Events

Undergraduate Scholarships

Automatically awarded Scholarships



You don't need to apply for these scholarships

Excellence Scholarship

What it is: A cash scholarship in both year 1 and year 2 of study worth £1,000.

Who it's for: Full-time Home and EU undergraduates with ABB grades at A Level or equivalent.

Off-Campus Scholarship

What it is: £1,200 tuition fee reduction for each year of study

Who it's for: Home/EU Students applying for full-time undergraduate programmes at designated partner colleges

Alumni Loyalty Scheme

What it is: A payment of £1,000 to reward loyal alumni who return to study a postgraduate degree at the University.

Who it's for: Alumni (graduates of the University) who enrol on a full-time masters-level postgraduate course (MA, MSc, LLM, MBA, PhD - excluding PGCE's) delivered at our Sunderland campus starting in Jan/Feb 2018.

Get There Scholarship

What it is: Free travel across Tyne and Wear for a year, or an accommodation discount on University-managed accommodation (including The Forge U Student Village)

Who it's for: Full-time Home and EU undergraduates.

Off-Campus Progression Scholarship

What it is: Up to £500 cash

Who it's for: For Home/EU Foundation degree students studying at partner colleges who progress to an on-campus top-up year

The Integrated Foundation Year Courses Scholarship

What it is: A Study Plus Card with up to the value of £200 and £75 worth of books.

Who it's for: For Full-time Home/EU undergraduate studying an Integrated Foundation Year Courses.

Scholarships you need to apply for



To receive these scholarships, you will need to apply for them.

University of Sunderland Scholarship

What it is: A cash scholarship in both year 1 and year 2 of study worth £1,000

Who it's for: For full-time Home/EU students with an annual household income of less or equal to £42,875*. Application deadline: 29 June 2018. This scholarship is strictly limited in numbers of scholarship awards made.

Study Abroad Scholarship

What it is: Up to £1,000 cash to fund a short international programme in Year 2

Who it's for: For Full-Time Home/EU students with an annual household income of less or equal to £42,875*. This scholarship is strictly limited in numbers of scholarship awards made.

Royal Television Society undergraduate bursary

What it is: £3,000 + extra benefits from the Royal Television Society.

Who it's for: Applicants for BA (Hons) Broadcast Media Production or BA (Hons) Broadcast Journalism. Please note that this scholarship is awarded by the Royal Television Society, not the University of Sunderland.

Elite Athlete Scheme

What it is: Up to £1,000 worth of funding and support (please note, support packages may vary and are individually awarded)

Who it's for: Any student enrolled at the University of Sunderland.

Scholarships for current students

Scholarships you can apply for as a current University of Sunderland student

Futures Fund Student Opportunity Scholarship

What it is: Up to £500

Who it's for: Any full or part-time student studying at the University of Sunderland

The Sir Tom Cowie Memorial Scholarship Award

What it is: £10,000

Who it's for: Full-time undergraduate students studying a discipline related to Engineering, Education, Enterprise or Business who are at the end of their penultimate year (second year for a standard programme or third year for a four-year programme) and on track for a first or 2:1. Students must hail from the immediate Sunderland area and demonstrate financial need.

Futures Fund Excellence Scholarship

What it is: Up to £2,000

Who it's for: Any penultimate year full-time student, studying with the University of Sunderland, who is considered, by their board of study, to be on track for a first class honours degree.

Futures Fund Graduate Development Scholarship

What it is: Up to £2,500

Who it's for: Any full or part-time student in the final year of their undergraduate study and also recently graduated alumni (up to one year) made.

The Hope Winch Benevolence Fund Scholarship

What it is: £1,000

Who it's for: Current undergraduate students studying pharmacy at the University of Sunderland who face serious financial challenges which impact upon their academic potential

Scholarships for current students



Scholarships you can apply for as a current University of Sunderland student

The Robson Visual Arts Masters Award

What it is: £2,000 financial assistance to help students complete their course

Who it's for: Masters level students in Glass, Ceramics, Photography, Curating or Fine Art. Students must have a firm offer and meet specific scholarship criteria.

The Mike Davies Scholarship for Innovation

What it is: £1,000

Who it's for: Students studying BA Glass and Ceramics (stage 2 and 3), MA Glass, MA Ceramics, PhD Glass and Ceramics. Awarded to allow students to undertake a project or opportunity that will lead to innovative uses of glass or ceramics for creative use.

Government grants

The Government offers several grants that don't need to be paid back to help with the costs of Higher Education.

Disabled Students' Allowance

What it is: If you have a disability or specific learning difficulty such as dyslexia, you can get a Disabled Students' Allowance (DSA) to help pay for any equipment and support you need

Who it's for: Full-time/part-time undergraduates and postgraduates are eligible for DSAs on top of any other loans, grants and bursaries



Our Campuses

RIVER
CAMPUS

CITY
CAMPUS

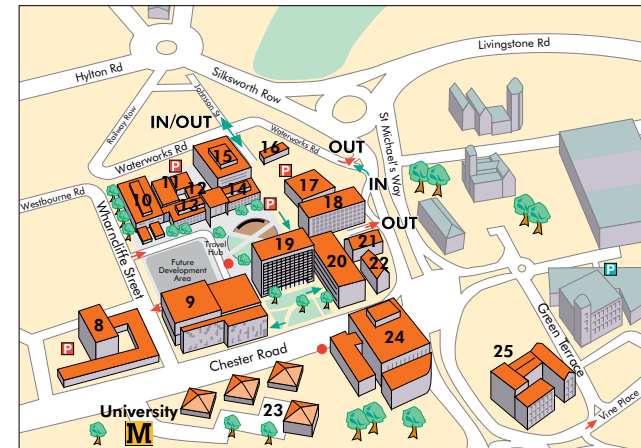
LONDON
CAMPUS

Map Of Sunderland and University Campuses



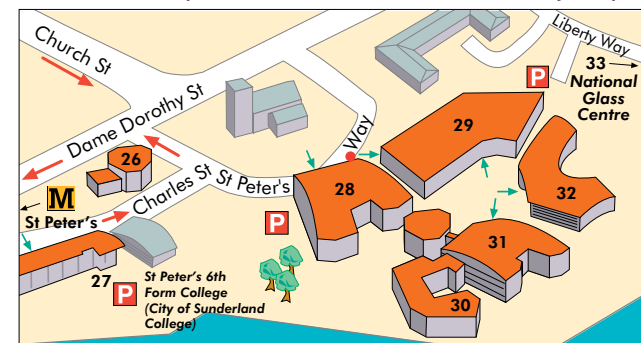
KEY TO BUILDINGS

- | | | |
|--|---|---|
| 1 Ashburne House (inc. Ashburne Resource Centre and The Vardy Gallery) £ | 8 Forster Building | 24 The Murray Library £ |
| 2 Clanny House | 9 CitySpace | 25 Priestman Building |
| 3 The Forge – U Student Village inc. The Meeting Place (TMP) £ | 10 Darwin Building | 26 North Shore – student nightclub & bar / Wearbank House £ |
| 4 Precinct | 11 Darwin Annex | 27 St Peter's Gate (Sunderland Science Park) |
| 5 Panns Bank (Hart Court & Douglas Court) | 12 The Ecology Centre | 28 The Reg Vardy Centre £ |
| 6 Scotia Quay (Allan House & Russell House) | 13 Dale Building | 29 The David Goldman Informatics Centre |
| 7 Students' Union Bonded Warehouse £ | 14 Pasteur Building | 30 St Peter's Library |
| | 15 Fleming Building | 31 The Prospect Building (inc. The Sir Tom Cowie Lecture Theatre) £ |
| | 16 ISOC Facility | 32 The David Puttnam Media Centre |
| | 17 Johnson Building | 33 National Glass Centre £ |
| | 18 The Design Centre | |
| | 19 Edinburgh Building | |
| | 20 The Gateway | |
| | 21 St Mary's Nursery | |
| | 22 St Mary's Building | |
| | 23 Technology Park (inc. Unit 3 – Print Centre) | |



Sir Tom Cowie Campus

City Campus



Location of London Campus





RIVER

CAMPUS
Sir Tom Cowie

One of the top five
campuses in the UK

You can find the Schools of
Business and Law, Applied
Sciences, Education and
society and Media Department

The David Puttman Media Centre
The David Goldman Informatics Centre
Reg Verdy Centre • The Prospect Building
National Glass Centre • N. Shore Students Union Venue



In the heart of the city with
a wide of retail outlets,
cafes and restaurants

You can find the schools of
Education and Society, Applied
Sciences, Arts and Design

Science complex

CitySpace

The Gateway

Priestman Building

An aerial photograph of a city, likely London, showing a large river (the River Thames) flowing through the center. On the left bank, there are several modern high-rise buildings. On the right bank, there are more buildings, including some older, lower-rise structures. A large, modern building complex is visible in the foreground, situated on the left bank. The text "LONDON" is written in large, white, sans-serif capital letters across the middle of the image, with "CAMPUS" written in smaller, white, sans-serif capital letters below it. A small Union Jack flag is visible in the top right corner.

LONDON

CAMPUS

Four intakes during the year
January - April - August - October

**Strong working links with many
of the corporate giants nearby**

**We deliver high quality education that leads
to globally-recognised qualifications.**

**Located in Europe's most
important financial Centre**

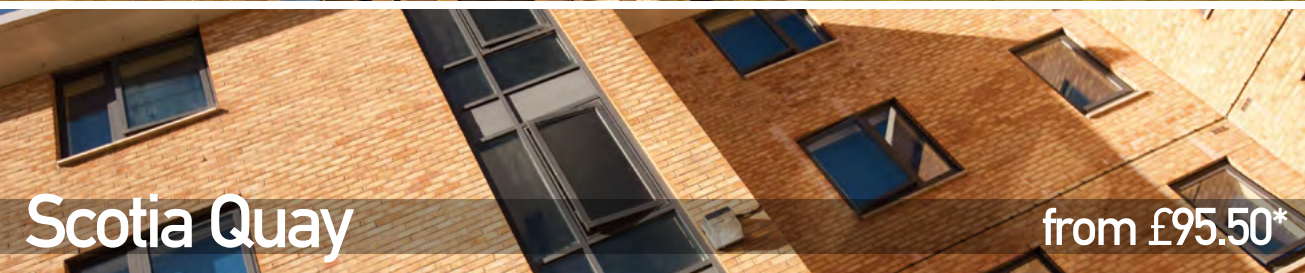
Accommodation

Halls of residence in Sunderland



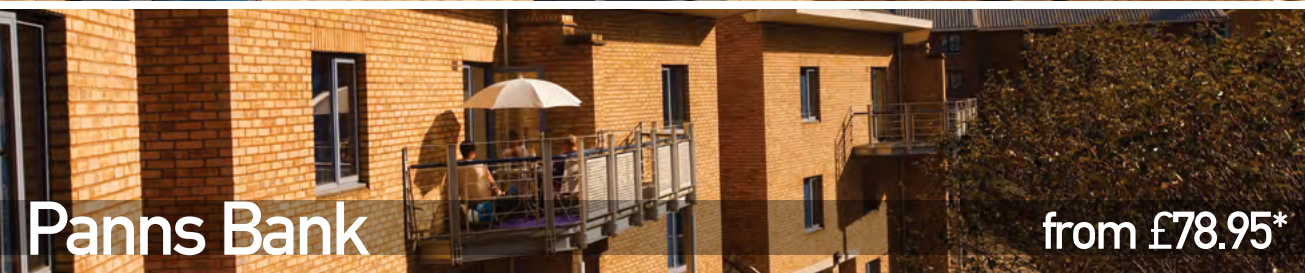
Clanny House

from £72.11*



Scotia Quay

from £95.50*



Panns Bank

from £78.95*



The Forge - U-Student Village

from £72.00*

Single study bedroom /ensuite

Fully equipped kitchens

Laundry facilities

All inclusive living
(internet, heating, lighting, fuel)

24/7 Campus
Safety

*prices per week

Accommodation at London Campus



Unite

Our accommodation partner UNITE can help you find the perfect place in London.

- > You can choose an ensuite bedroom in a shared flat if you want to live with friends, or a studio apartment if you prefer to live independently.
- > Prices start from £149 per week. All bills are included (water, electricity, heating, Wi-Fi and contents insurance)
- > 24-hour security cameras and secure door entry systems.

University life

Sports Clubs

Aikido	Darts	Golf	Rugby Union (Men's)	Table Tennis
American Football	Equestrian	Handball	Rugby Union (Women's)	Taekwondo
Archery	Football (Men's)	Hockey	Sendai Karate	Tennis
Athletics		Judo	Snow Sports	Trampolining
Badminton	Football (Women's)	Kickboxing and Self Defence	Squash	Volleyball
Basketball		Marine Adventure	Scuba Club	Water Polo
Cheerleading	Freefall Society	Netball	Swimming	
Cricket	Futsal	Rowing		
Dance	Gaelic Football			

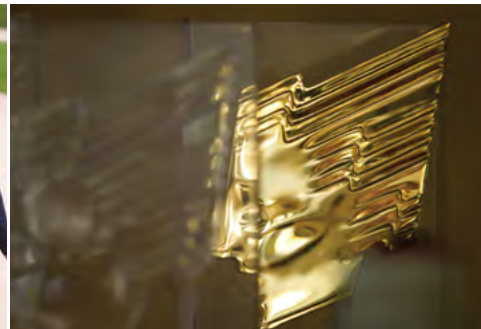


University life

Societies



Business Society	Education Society	Hong Kong and	Pole Fitness
Afro-Caribbean	Enterprise Society	Malaysian Society	Society
Society	Feminist Society	Islamic Society	Sikh Society
Bethel Campus	Formula Student	Kuwaiti Society	
Fellowship	Motorsport Team	Law Society	
Christian Union	Gothic Society	LGBT Society	
Coco-Society	Games Club	Mount Kilimanjaro	
Debating Society	Hope Fellowship	Society	
Drawing Society	Society	Nigerian Society	



University life

London Campus

Urban Active is an exciting way to have fun, de-stress, meet new friends, & stay physically active at the University of Sunderland

Wimbeland	Circuits	Ultimate Frisbee	Beach Festival
Basketball	Geo-Caching	Glow Events	Easter Egg Fun Run
Table Tennis	Goal Ball	Zombie Santa Fun	Cardio Tennis
Cricket	Roller Disco	Run	Dodgeball
Running bUS	Rounders	Cycle-in Movie Nights	Futsal
Fighting Fit	Skip To The Beat	Find Your Match	Street Golf
Football Tennis	Soft Ball	Urban Games	Club Social
Volleyball	Swim Fit	The Hall's Honour	Stress Busters
Battle Badminton	Tag Rugby	Shield	Yoga





Campus Safety



- > Sunderland is one of the **safest universities in England and Wales**, according to official police data published in June 2014.
- > Student safety is very important to us at Sunderland, and we provide a number of support services to help students to study and socialise in a safe environment.
- > Our free campus bus provides safe and reliable transport between the two campuses and all the student accommodation centres.
- > During the evenings the campus bus operates a night service, which also calls at the Students' Union social venues North Shore and the Bonded Warehouse.

Student Support

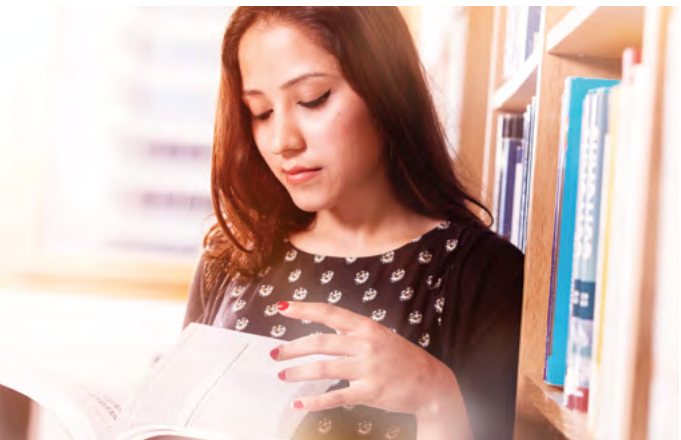
- > The Gateway
- > Student Financial Advice
- > Counselling
- > Health and Wellbeing
- > Chaplaincy
- > Disability and Specific Learning Difficulties
- > Support for Looked After Young People and Care Leavers



London Campus

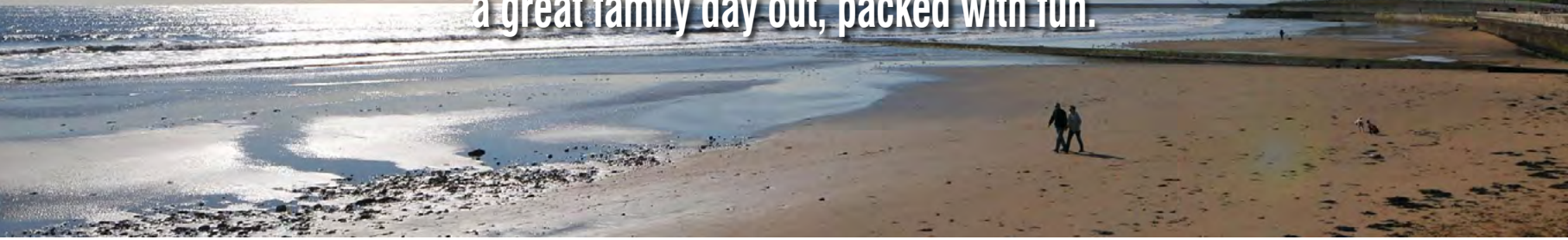
Support & Facilities

- > The Gateway
- > Library
- > Counselling
- > Health and Wellbeing Service
- > Careers Service
- > Support for starting your own business
- > Common Room



Life in Sunderland City

There is plenty to see and do in Sunderland from beautiful beaches and countryside, to theatres, museums and galleries. Many of the city's attractions are free and all offer a great family day out, packed with fun.



Life in London

London is one of the most famous cities in the world. It has a huge amount of attractions, museums, events and open spaces to explore, as well as job opportunities and people from all over the world to meet.



University Contacts

SUNDERLAND

 www.facebook.com/sunderlanduniversity

 www.twitter.com/sunderlanduni

 www.instagram.com/sunderlanduni

 www.youtube.com/sunderlanduniversity

HELPLINE: +44 0191 515 3000

 www.sunderland.ac.uk

 europa@sunderland.ac.uk

About Us: aboutus.sunderland.ac.uk **Lives Online:** www.livesonline.sunderland.ac.uk

LONDON CAMPUS

 www.facebook.com/my.uslc

 www.twitter.com/uoslondoncampus

 www.youtube.com/sunderlanduniversity

HELPLINE: +44 (0)20 7531 7333

 londoncampus.sunderland.ac.uk/

 gateway-london@sunderland.ac.uk

YOUR FUTURE WITH SUNDERLAND



**University of
Sunderland**

» **European**
Regional Office

@ europe@sunderland.ac.uk
www.sunderland.ac.uk • www.sunderland.gr
11c Dekelias Avenue, Nea Halkidona, Athens, Greece
Tel: +30 210 9212 885, Fax: +30 210 9212 767